

# 局限蚊一新种记述

(双翅目:蚊科)

龚正达

(云南省流行病防治研究所,下关)

最近,在整理1984年从滇西采到的一批局限蚊中,发现局限蚊亚属一新种。

## 丛鬃局限蚊 *Topomyia (Topomyia) hirtusa* 新种

种的记述 仅发现雄蚊。小型暗色蚊,翅长3.0 mm。头:触须暗色,长约为喙的1/7;喙暗色,从基部至端部的腹面具白色纵线,长为前足股节的5/6。胸:前胸前背片平覆银白宽鳞;后背片平覆宽鳞,近上缘鳞片暗色,其余的淡色。小盾片平覆暗色宽鳞,中叶具少

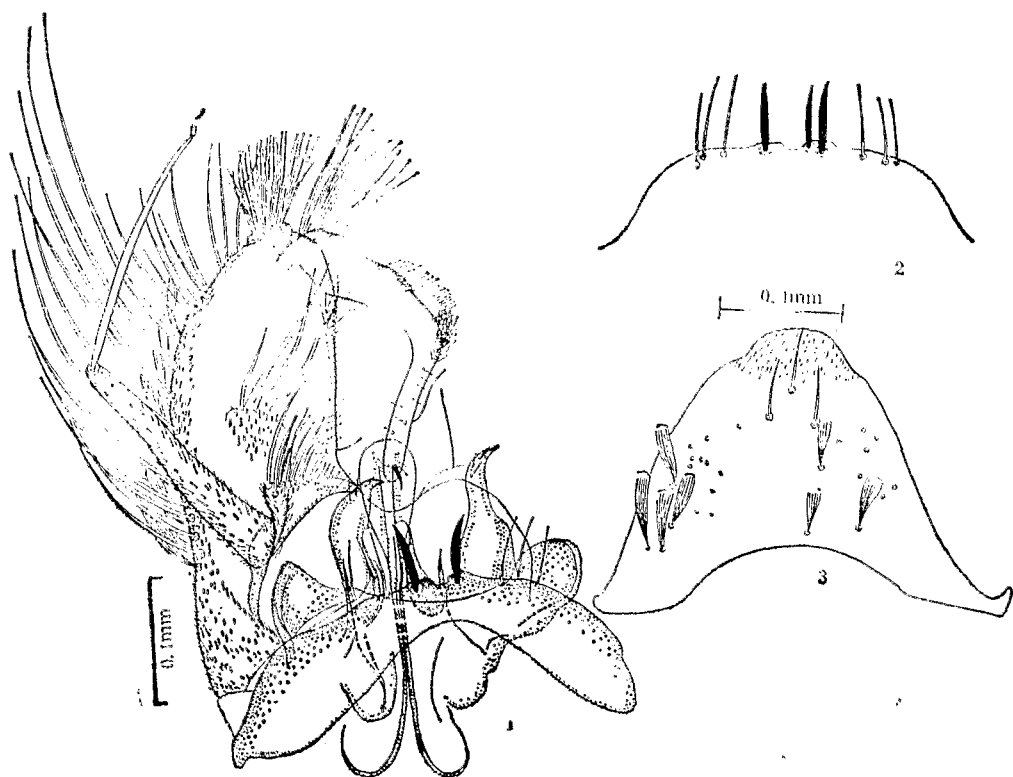


图1—3 丛鬃局限蚊 *Topomyia (T.) hirtusa* sp. nov. ♂ 生殖器

1. IX T 和抱器; 2. IX T 后缘刺变异; 3. 第九腹节腹板

数白色鳞;侧背片光裸;中胸侧片、腹侧板及后侧片大部平覆银白宽鳞。后胸侧板近中央(后气门下)具一银白鳞丛:翅:翅鳞一致暗色。足:各足暗色。前足股节从基部至端部的腹面淡色;跗节2比节3短。中足从股节基部1/3至第5跗节末端的腹面具白色纵条。后足从股节基部至第5跗节末端的腹面具白色纵条。腹:腹节背板暗色,IT具一大侧白斑,II-VII T具侧白斑并连成一条直线;腹板一致淡黄色。尾器(图1—3):腹节IX T侧叶突起靠近,上具一对粗刺,外侧各具3根约与刺等长的细毛。腹节IX S近端部具3根小鬃。抱肢基节中叶具4根刚毛,其中一根较短小;有背端叶(背端突起),上具一丛(约25根)约等长的短鬃,其内侧近抱肢端节基下还有一丛(约11根)较粗长的鬃。抱肢端节肘状,基部宽,自中部逐渐细至端部;中部背面具很多密生的细毛,毛的长度约与其在端节着生部的宽相等;指爪小,端尖。小抱器基部内叶具2根粗毛和许多细毛;小抱器柄细长,管状;刀叶细长,粗鬃状,末端具一火苗状附属物。载肛突末端尖,合成2齿;近端部具肛毛两根。

讨论 本蚊种仅发现雄蚊,外形与屈端局限蚊 *T. (T.) inclinata* Thurman, 1959 雄蚊近似,但后者的中胸小盾片中叶无白鳞;前足股节腹面仅基部2/3淡色,中足股节腹面全淡色;尾器的抱肢基节无背端突起和毛丛以及抱肢端节中部背缘无很多细毛特征不同。

标本记录 正模1♂,副模2♂♂。均是采于云南盈江县河谷青芋叶腋积水的幼虫羽化的成虫,海拔830米,1984. VIII。龚正达采。标本保存于云南省流行病防治研究所。

### 参 考 文 献

- 龚正达、陆宝麟 1984 我国局限蚊亚属和蚊种新记录。四川动物 2: 10。  
 Barraud, P.J. 1934. Fauna British India including Ceylon and Burma. Diptera. Vol. V. Family Culicidae. London: Taylor & Francis. 463 pp.  
 Thurman, E. B. 1959. A contribution to a revision of the Culicidae of northern Thailand, Univ. Maryland Agr. Exp. Sta. Bull. A-100, 182.

## A NEW SPECIES OF GENUS *TOPOMYIA* FROM YUNNAN, CHINA (DIPTERA: CULICIDAE)

*Topomyia (Topomyia) hirtusa* sp. nov.

cmfwyp cmfwyp c

Male Small, dark. Wing 3.0 mm. Palpus and proboscis dark; ventral of proboscis with white line to apex. Foreleg dark, ventral pale line from base to apex of femur; foretarsus t2 shorter than t3; midleg dark, with ventral white line from nearly base of femur to apex of t5. Hind leg dark, with ventral white line from base of femur to apex of t5. Terminalia lobes of IXth tergite close together with 2 stout spines and with 3 lateral setae on each lobe. Ventro-medial lobe of basimere with 3 long and a shorter setae; dorso-apical lobe with a prominent tuft setae; apex region also with a tuft setae but longer. Distimere elbowed, with many minute setae on dorsal surface of middle part.

The new species similar to *T. (T.) inclinata*, but the combined characteristics of its general appearance and the specialized tufts of setae on the basimere and distimere differ markedly from the latter and other members of this Subgenus.

Female and Larva unknown.

The types are kept in the Research Institute of Epidemic Diseases of Yunnan.