

# 库蚊一新种\*

张恒才 赵善贤 黄柏湘 陈松发

(广东省卫生防疫站) (新会县卫生防疫站)

在1964年7月新会县古斗山采的蚊虫标本中,发现孳生在猪笼草 [*Nepenthes mirabilis* (Lour.) Druce] 内的一种蚊,经鉴定系一新种。

## 古斗库蚊 *Culex (Mochthogenes) gudouensis* 新种

一、成蚊 小型深棕色种,中胸前侧板自上而下由淡色鳞构成一宽带。

雄蚊 头顶为窄淡色鳞和棕色直立叉状的鳞片丛,两侧为扁平淡色鳞片;眼黑色,眼缘有毛3—4根,额毛2根。触须显著比喙短(5:11),末节约为倒数第二节的1/6。喙离基部的不远处有一小壶腹,边缘有微毛。触角深棕色。

胸 中胸背板棕色,上有弯曲棕色鳞片,背脊中刚毛和翅前刚毛黑色粗壮,小盾板中叶有黑色毛4根,侧叶为3根。胸侧板褐色,前胸前背片和后背片都无鳞片,但前胸前背片有毛4根,前胸侧板有毛3根和几片淡色鳞;中胸前侧板自上而下由淡色鳞构成一宽带,带的后缘有一行淡棕色毛11—13根,中胸后侧板无毛。

翅 长约2.2毫米,前缘脉和亚前缘脉为黑色宽鳞片覆盖,其余翅脉为狭鳞片,色淡,前横脉比后横脉靠近翅端,前、后又室约为基柄的2倍和1.4倍长;第6纵脉的鳞片正常。

腿 各腿基节覆盖白色鳞片;股节背面棕黑色,腹面色淡;前足第一跗节比胫节长;中腿股节稍肥大。各足胫、跗节棕色,无淡色环。

腹 背板第一至第七节暗色,为棕色鳞覆盖,无淡色带;第八节有淡色鳞;背板两侧缘和腹面为淡黄色。

雄蚊外生殖器(图1—2):基侧片亚端叶有四个宽叶片,另有弯曲成直角的刺三根,和不弯曲的刺二根。阴茎分两个侧片,每侧片有粗齿一排,顶端为齿轮状。第十腹板有刺冠,基节末端外侧有刚毛三根。

雌蚊与雄蚊无大差别,触须为喙长的1/7,顶端有端毛;中胸背板刚毛比雄蚊的细弱,中胸前侧板由淡色鳞构成的宽带比雄蚊的明显;腹部第八节无淡色鳞片。

二、幼虫 头(图3—4):头宽度大于长度,色淡;前唇基刺粗短。额毛A分3—4枝,额毛B分2—3枝,若分2枝则较粗较长,额毛C分3—4枝,B、C毛伸达头部前缘;A、B、C毛均有小分枝;d毛2分叉。触角毛着生于靠近顶端的2/5处,分2枝,达到触角顶端。下唇基节每侧有6个齿。

胸 前胸1号毛长分2枝,2—4号毛单枝,比1号毛长,中、后胸各侧毛正常,比较长。

\* 本文在何桂铭同志指导下完成,经洗维逊同志审阅。

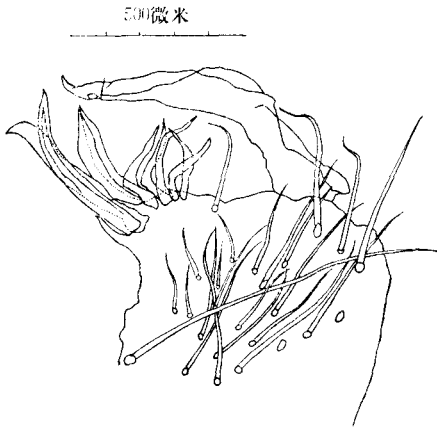


图1 雄蚊抱握器



图2 雄蚊阴基和第十腹板

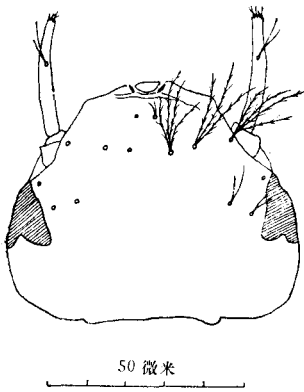


图3 成熟幼虫头部

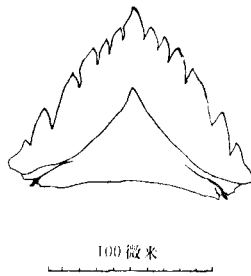


图4 下唇主节

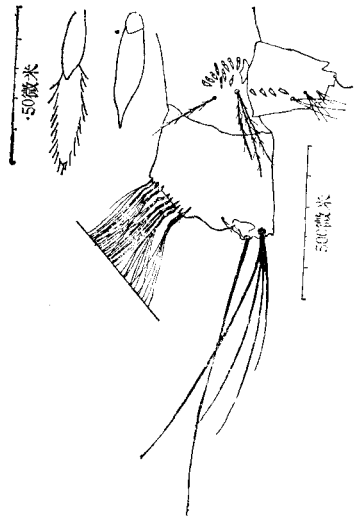


图5 成熟幼虫尾部、栉齿和梳齿

腹 第二至六节侧毛分 4 枝,第八节(图 5)有栉齿 9—13 个,多数为 10 个,栉齿两侧及顶端有缝,无巨齿。Pentad 毛粗壮。呼吸管很短,长度与基径宽相等或稍长些,梳齿 3—4 个,无侧齿,呼吸管毛 3 对,分 3—4 枝。

本蚊种幼虫与 *Culex (Lophoceraoyia) curtialpis* Edw., *Culex sumatranus* Brug 的幼虫呼吸管都是比较短的,但本蚊种幼虫呼吸管长度与基径宽相等或稍长些,梳齿无侧齿;而第二者呼吸管长度为基径宽的 1.5 倍,梳齿有 2—4 尖锐而细小的侧齿;第三者呼吸管长度至多为基径宽 1—1.5 倍,梳齿有侧齿,所以三者的成熟幼虫可以区别。

幼虫孳生地 猪笼草 [*Nepenthes mirabilis* (Lour) Druce]。

共生蚊种 巨型阿蚊 [*Armigeres (Leicesteria) magnus*]。

模式标本 正模 1 ♂,副模 6 ♂♂, 5 ♀♀,保存在广东省卫生防疫站。

## A NEW SPECIES OF *CULEX*

CHANG HENG-TSAI AND ZHAO SHAN-XIAN

(*Kwangtung Health station*)

HANG BAI-XIANG AND CHEN SONG-FA

(*Xin-hui Shien Health Station of Kwangtung*)

### *Culex (Mochthogenes) gudouensis* sp. nov.

Adult: Small deep brown species, mesepisternum with a paler white broad scale band.

Male head: Vertex covered with tinge narrow scales towards sides. Eyes black in colour, eye-margin bristles 3 to 4, frons bristles 2. Antenna deep brown in colour, without scales. Palpi shorter than proboscis, as 5:11.

Thorax: Mesonotum deep brown, covered with curved brown scales, dorsocentral hairs dark, scutellum deep brown, each lobe with dark hairs 3 to 4. Anterior pronotum with hairs 3 to 4, propleuron hairs 3, mesepisternum with a paler white wide scale margin and a row of 11 to 13 brown hairs, without lower mesepimeral hair. Wing: about 2.2 mm, C and Sc covered with black wide scales, other veins are narrow scales. Legs: brown, undersides of femora paler, tarsi without any white mark.

Abdomen: Dorsum brownish-black, ventral sides and ventrum paler-yellow, without paler band.

Hypopygium: Coxite with 4 leaves, 3 curved spines on subapical lobe, and 2 plumb spines. Lateral plate or phallosome with a row of large teeth, and another row at tip. Paraproct with spines at crown.

Female: General size as male. Palpi about 1/7 length of proboscis.

Larva head broader than long. Paler in colour. Preclypeal spines stout and short. Frontal hair A, 3 to 4 branches, frontal hair B, 2 to 3 branches, or 2 branches very stout and long, frontal hair C, 3 to 4 branches; B, C hairs reaching far beyond front of head; frontal A, B, C all with small branches; hair d, 2 branches. Antennae slightly curved, tuft 2 branches, placed at about 2/5 of length from tip. Mentum with 6 teeth on each side. Comb of abdominal segment with 8, 9 or 13 teeth, usually 10. Pentad hairs very stout. Siphon remarkably short, as long as the diameter at base. Pecten 3 to 4, without lateral tooth. Siphonal tufts three pairs, with 3 to 5 branches.

Type locality: Xin-hui Shien, Kwangtung Province.

Breeding place: *Nepenthes mirabilis*.

Type specimens: Holotype 1♂, paratype 6♂♂, 5♀♀, deposited in the Kwangtung Health Station, Kwangchow.